



Submittal Data Information

101-125

3-Speed Cartridge Circulators

Effective: April 26, 2007

Supersedes: NEW

Job: _____ Engineer: _____ Contractor: _____ Rep: _____

ITEM NO.	MODEL NO.	IMP. DIA.	G.P.M.	HEAD/FT.	H.P.	ELEC. CHAR.

Features

- 3-Speed Switch
- Fine tune to system requirements
- Highest performance & starting torque in class
- Heavy duty construction for longer life
- 4-bolt universal flange (0010 only)
- Removable high-flow Integral Flow Check (IFC®)
 - Prevents gravity flow
 - Reduces installation costs
 - Improves pump performance
- Replaceable cartridge design
- Quiet, efficient operation
- Self lubricating, no mechanical seal
- Wide range of applications
- Cast Iron, flanged construction

Materials of Construction

- Casing: Cast Iron
- Integral Flow Check (IFC®):
 - Body, Plunger...Acetal or Noryl®
 - O-ring Seal.....EPDM
 - Spring.....Stainless Steel
- Stator Housing: Steel
- Cartridge: Stainless Steel
- Impeller: Non-Metallic
- Shaft: Ceramic
- Bearings: Carbon
- O-Ring & Gaskets: EPDM

Model Nomenclature

- F – Cast Iron, Flanged
- MS – 3-Speed Switch
- IFC – Integral Flow Check

Performance Data

	00R	0010
Flow Range (GPM):	0-18	0-29
Head Range (FT):	0-21	0-10.5
Minimum Fluid Temperature:	40°F (4°C)	
Maximum Fluid Temperature:	230°F (110°C)	
Maximum Working Pressure:	125 psi	
Connection Sizes:	3/4", 1", 1-1/4", 1-1/2" Flanged	



FOR INDOOR USE ONLY

Noryl is a trademark of General Electric Company

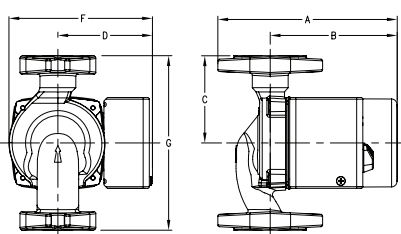
Application

The **00R 3-Speed Radiant pump** is specifically designed for the flow and head requirements of today's radiant heat systems. Its' 3-Speed switching capability provides fine tuning control to match a wide combination of tube diameters and length of runs. The 00R 3-Speed Radiant pump is a direct replacement for the Grundfos UPS 15-58 3-Speed. The 00R delivers the highest starting torque in its class and a removable, high-flow Integral Flow Check (IFC®) that prevents gravity flow, reduces installation costs and improves pump performance.

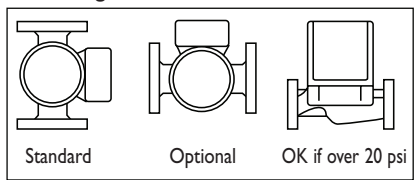
The **0010 3-Speed Service pump** is designed as an ideal replacement circulator for service contractors to use on any emergency "no-heat" call. The 0010 3-Speed replaces most commonly used circulators. Simply install it and set the speed to match the original pump performance. The handy new four bolt flange matches up to any pump regardless of style, type or age.

Pump Dimensions & Weights

	A		B		C		D		F		G		Ship Wt.	
	in.	mm	in.	mm	in.	mm	in.	mm	in.	mm	in.	mm	lbs.	Kg
Cast Iron Models														
00R-MSFI-IFC	6-1/2	165	4-5/8	118	3-3/16	81	3-7/16	87	5-3/8	137	6-3/8	162	9	4.0
00R-MSFI-I IFC	6	152	4-5/8	118	3-3/16	81	3-7/16	87	5-3/8	137	6-3/8	162	9	4.0
0010-MSFI-IFC	6-11/16	170	4-3/4	120	3-3/16	81	3-7/16	87	5-1/2	140	6-3/8	162	10	4.5



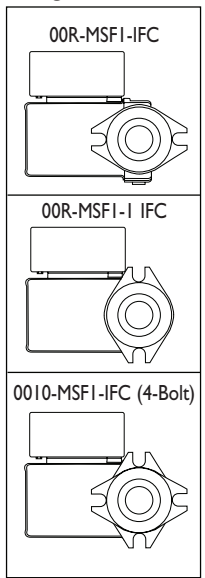
Mounting Positions



Electrical Data

Model	Volts	Hz	Ph	Amps			RPM	HP
				Speed 1	Speed 2	Speed 3		
All Models	115	60	1	.75	.91	1.10	3250	1/20
Motor Type	Permanent Split Capacitor Thermally Protected							

Flange Orientation



Performance Field - 60Hz

